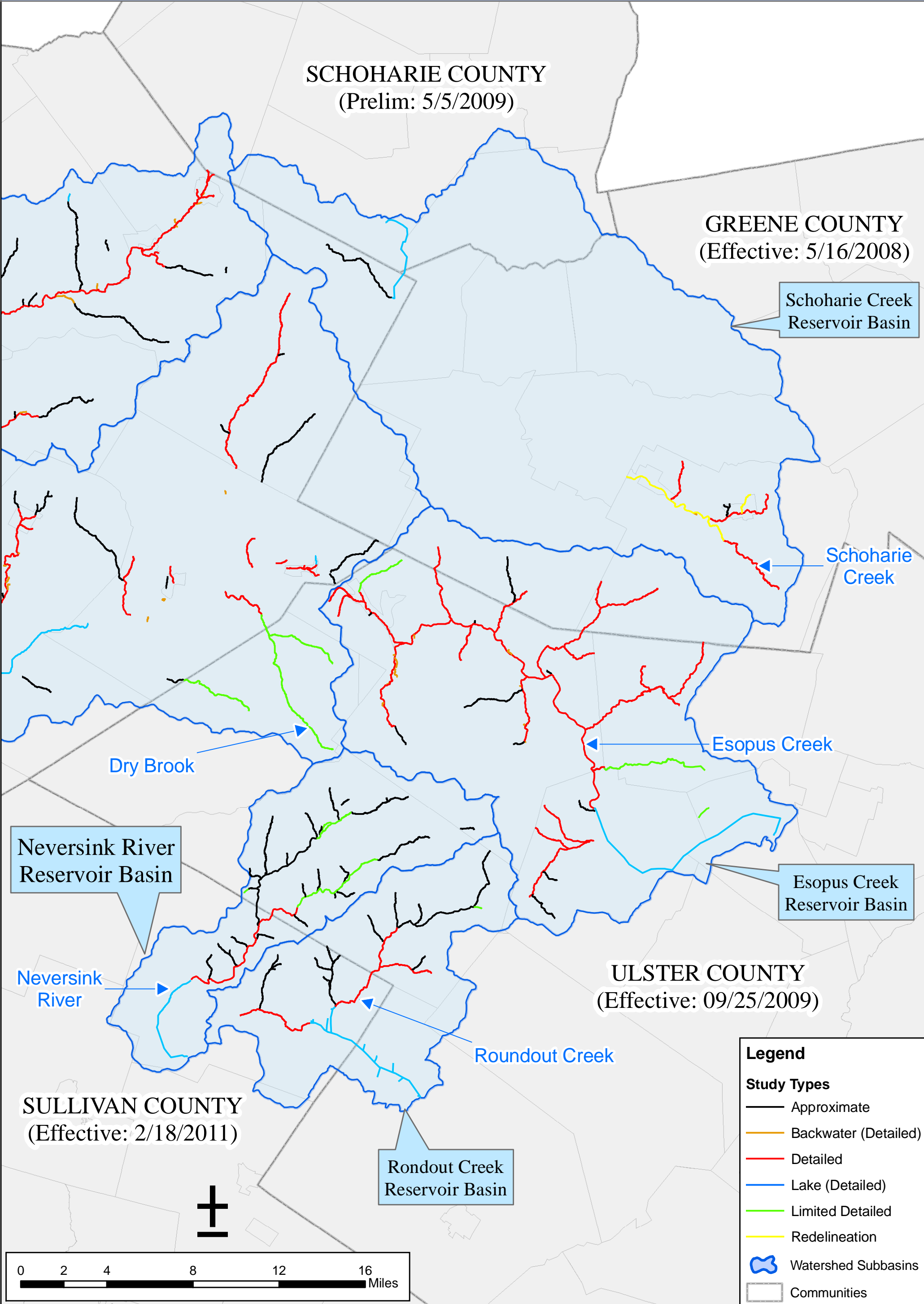


West of Hudson Watersheds Mapping Project Catskill Region Project Area

Catskill Region Map Steering Committee Meeting - June 16, 2011



SCHOHARIE COUNTY
(Prelim: 5/5/2009)

GREENE COUNTY
(Effective: 5/16/2008)

Schoharie Creek
Reservoir Basin

Schoharie
Creek

Esopus Creek

Dry Brook

Neversink River
Reservoir Basin

Neversink
River

Esopus Creek
Reservoir Basin

ULSTER COUNTY
(Effective: 09/25/2009)

Rondout Creek

SULLIVAN COUNTY
(Effective: 2/18/2011)

Rondout Creek
Reservoir Basin

Legend

Study Types

- Approximate
- Backwater (Detailed)
- Detailed
- Lake (Detailed)
- Limited Detailed
- Redelineation
- ⬡ Watershed Subbasins
- ⬡ Communities

